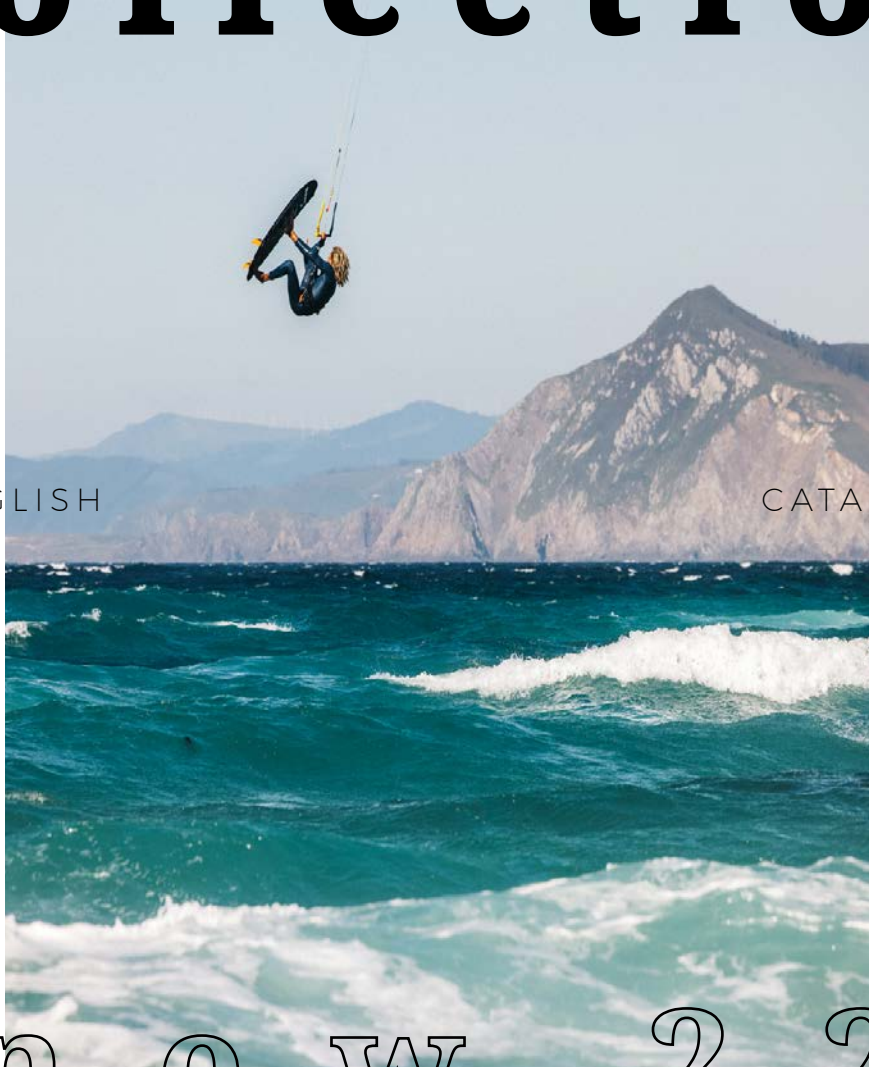


collection



ENGLISH

CATALOG

n e w 2 2

NEW COLL

20 22

STAY SALTY



MANERA.COM



Salty is a feeling

It's getting wild on the ocean, the sea spray all over our faces.

It's part of who you become when you're out there, lost with friends.

It's the salt encrusted in us after a long day playing with the waves.

After shower the salt is gone, but the feeling stays there.

s t a y s a l t y

S U M M _ A R Y

01 . NEOPRENE 4

OVERVIEW WETSUITS /6 -THICKNESS REPARTITION /7
KEY FEATURES /8

02 . NEOPRENE ACCESSORIES 10

OVERVIEW /12

03 . WATERWEAR 13

OVERVIEW /15

04 . PROTECTION 16

OVERVIEW /18

05 . HARNESS 19

OVERVIEW /21 - KEY FEATURES /22
HOW TO CHOOSE /24

06 . BOARDBAGS 25

OVERVIEW /27 - KEY FEATURES /28

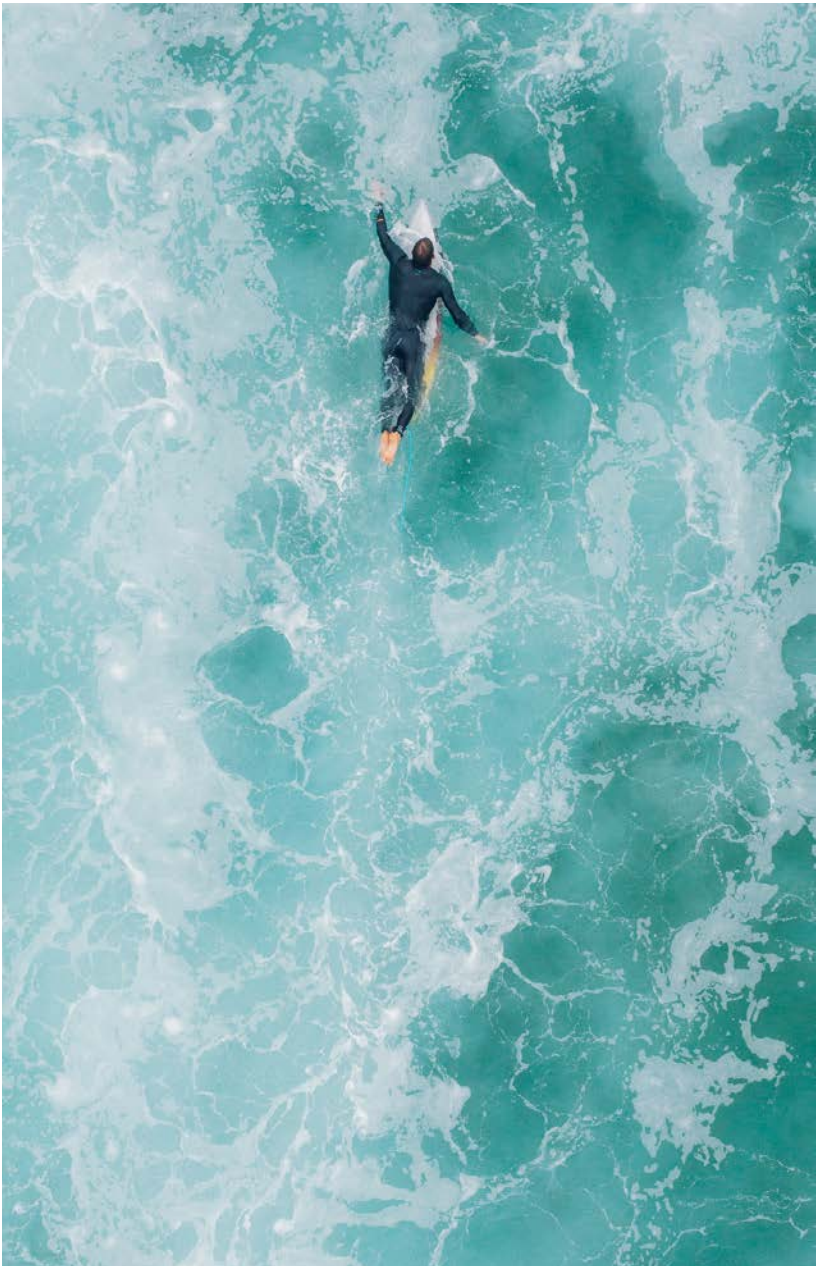
07. BOARDSHORTS 29

OVERVIEW /31

08. APPAREL 32

OVERVIEW /34

COLORS SHADES /35
OUR STORY /36



ASTURIES
ADVENTURE



stay wild



NEOPRENE



N	E	O
NEW COLL		
20	22	

E X P E R I E N C E T H E F I T
O F A N I N N O V A T I V E
3 D P A T T E R N - M A K I N G .



W A R M T H	C O M F O R T
&	



NEOPRENE

OVERVIEW

METEOR MAGMA



6.4

MAGMA HD- FZ
Ref. 22221-0100
Colors. BLACK



5.4.3

MAGMA HD - FZ
Ref. 22221-0101
Colors. BLACK



5.4.3

MAGMA - FZ
Ref. 22221-0102
Colors. BLACK

METEOR X10D



4.3

COMING IN
DECEMBER

X10D HOODED - FZ
Ref. 22221-0201
Colors. BLACK



5.4.3

X10D - FZ
Ref. 22221-0202
Colors. SLATE / BLACK



4.3

X10D - FZ
Ref. 22221-0203
Colors. PEWTER / BLACK



3.2

X10D - FZ
Ref. 22221-0204
Colors. BLACK

SEAFARER



5.3

SEAFARER - FZ
Ref. 22221-0302
Colors. SAILOR
/ ANTHRACITE



4.3

SEAFARER - FZ
Ref. 22221-0303
Colors. STEEL
/ ANTHRACITE



3.2

SEAFARER - FZ
Ref. 22221-0304
Colors. ANTHRACITE



5.3

COMING IN
DECEMBER

SEAFARER - BZ
Ref. 22221-0502
Colors. ANTHRACITE



3.2

COMING IN
DECEMBER

SEAFARER - FZ
Ref. 22221-0305
Colors. ANTHRACITE

Men

Women



5.4.3

MAGMA - FZ
Ref. 22221-1002
Colors. BLACK



5.4.3

MAGMA HOODED - FZ
Ref. 22221-1001
Colors. BLACK

METEOR MAGMA

SEAFARER



3.2

SEAFARER - FZ
Ref. 22221-3004
Colors. PEWTER



4.3

SEAFARER - FZ
Ref. 22221-3003
Colors. SAILOR



5.3

SEAFARER - FZ
Ref. 22221-3002
Colors. ANTHRACITE

NEOPRENE

SIZES

FZ XS-S-St-Ms-M-Mt-Ls-L-XL-XXL

BZ XS-S-M-ML-L-XL

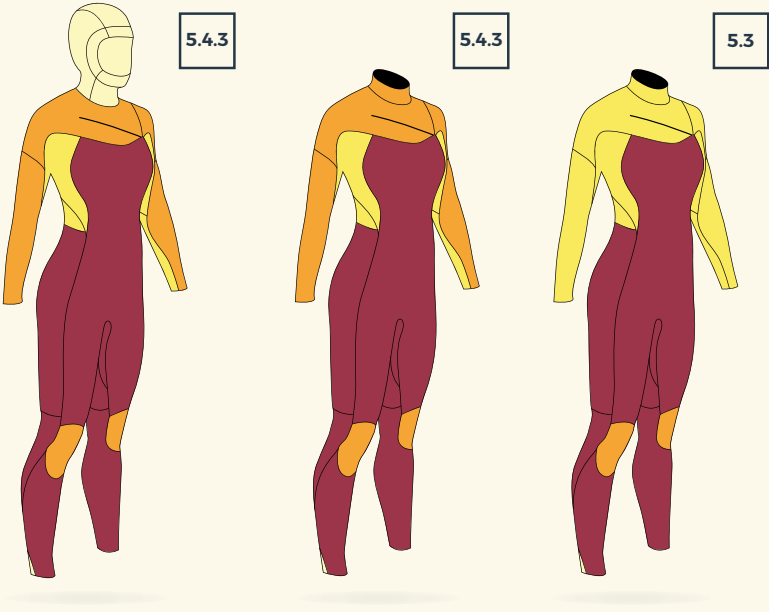
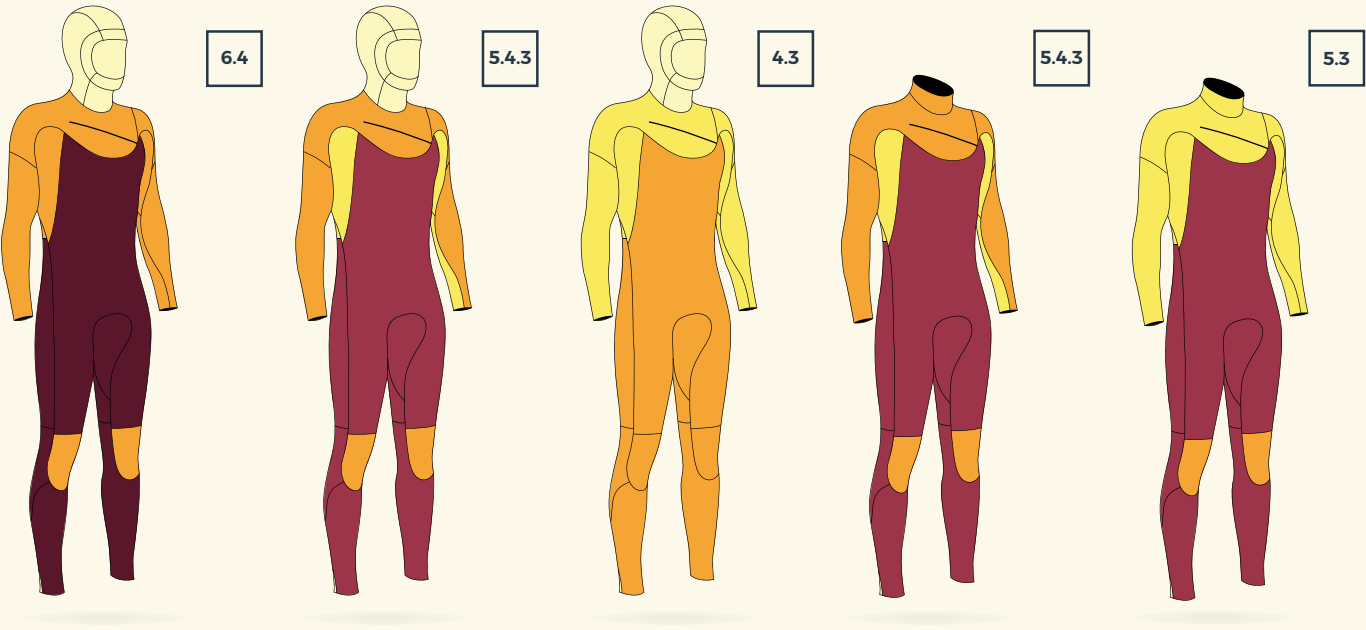
SIZES

XS-S-M-L-XL

THICKNESS
REPARTITION

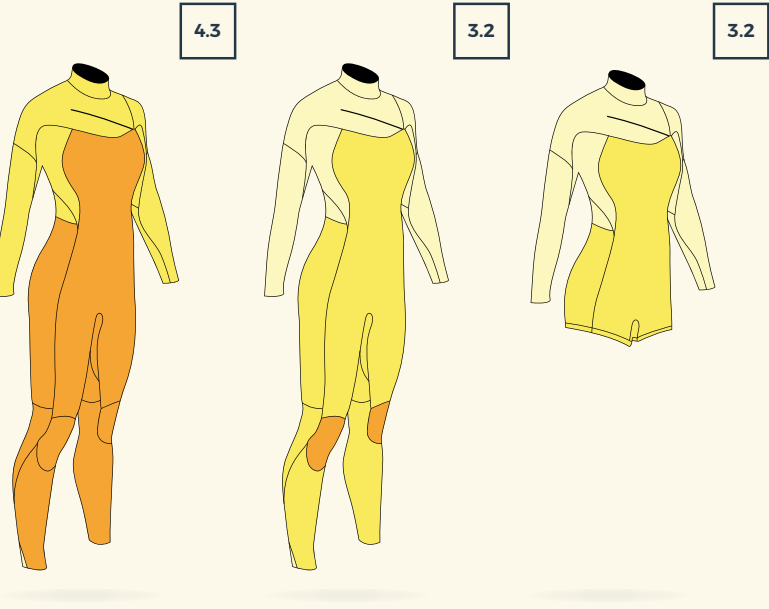
Men

Women



6 ^{MM}	50,7%				
5 ^{MM}		50,7%		54,8%	
4 ^{MM}	40,6%	33,2%	53,3%	35,9%	57,7%
3 ^{MM}		7,4%	37,9%	9,3%	42,3%
2 ^{MM}	8,8%	8,8%	8,8%		

47,4%	50,3%	52,9%
20,3%	26,5%	
23,6%	23,2%	47,1%
8,8%		

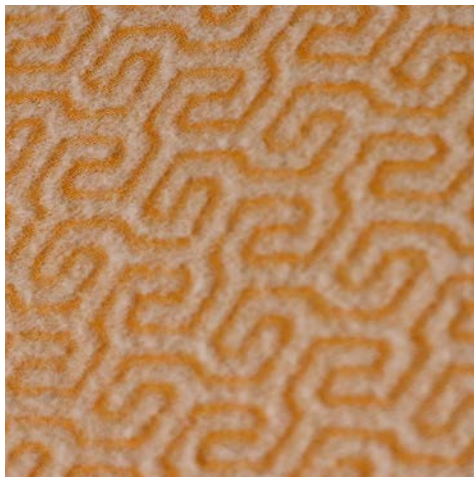


4 ^{MM}	57,7%	2,9%		
3 ^{MM}	42,3%	56,1%	50,1%	1,7%
2 ^{MM}		40,9%	49,9%	98,2%

52,9%	2,6%	
47,1%	51,6%	37,2%
	45,7%	62,8%

KEY FEATURESé

WETSUITS / MATERIALS



MAGMA PLUS

- New generation of thermal materials that insulates & keep you warm
- Best drying time on the market
- Lighter than a classic fleece

Available on MAGMA,



NEW

X10D PLUS

- Insulator & heat generator
- Ultra light
- Smooth feeling

Available on X10D & SEAFARER (5.3/4.3)



NEW

MAGMA

- Light & stretch
- Good feeling on the skin

Available on MAGMA



X10D JERSEY

- Light & stretch
- Good feeling on the skin

Available on SEAFARER



NEW

X10D JERSEY

- Light & stretch
- Good feeling on the skin

Available on SEAFARER



DESIGNED IN 3D

We use computer design to model good-fitted wetsuits in 3D, then we employ an innovative software that converts it into a precise 2D pattern for the factory.

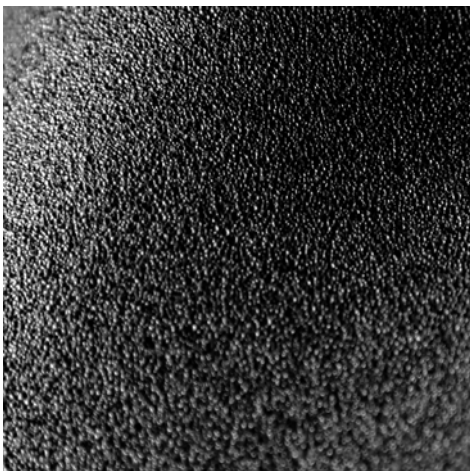
Available on ALL MODEL



REFLEX SKIN

- Best stretch of the market
- Durable: Tear resistant, UV resistant

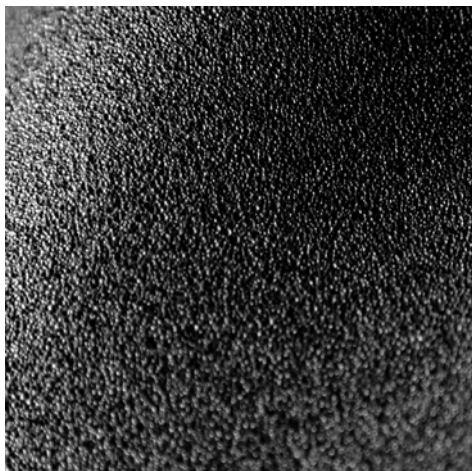
Available on ALL MODEL



AIRFOAM

- Made to be light, improving comfort & endurance
- Best flex & insulation on the market
- Quilted touch

Available on MAGMA & X10D



S-FOAM

- Made from Limestone
- Best flexibilty, heat & durability ratio on the market

Available on SEAFARER

KEY FEATURES

WETSUITS



SEALING PRINT

- Keep the water away
- Keep legs & arms panels in place

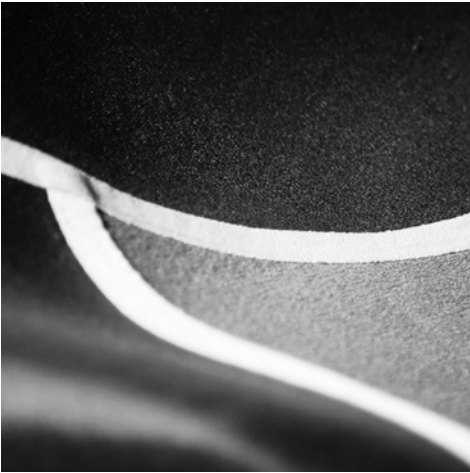
Available on ALL MODEL,
except on HYBRID & SHORTY



GBS SEAMS

- Neoprene glued together & blind-stitched
- High level of flexibility
- 100% waterproof

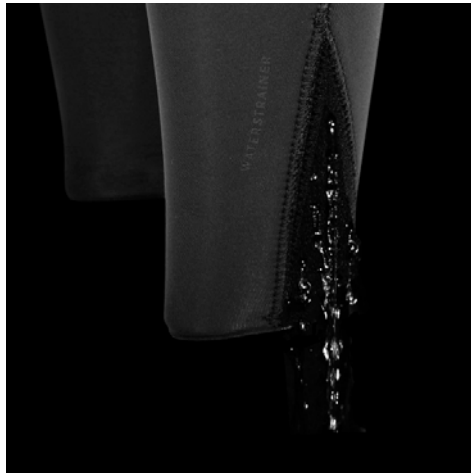
Available on SEAFARER



SD² TAPE

- Triple glued / Blind stitched / Inside tape welded by an air heater machine
- Durable & Flex
- 100% waterproof

Available on MAGMA & X10D



WATER STRAINER

- Drains the water out of the leg
- Continue the session in the best possible conditions

Available on MAGMA & X10D
except on HYBRID & SHORTY



BACK KNEE EMBOSS

- Helps the neoprene to bend more naturally
- Greater comfort during flexion

Available on MAGMA



BACK ZIP

- We use a PK 8mm zip built in high quality nylon, it is a short zip (30cm) in order to maximize the back flexibility.
- An inside flap covers the back and goes around the neck, it protects the back from the outside zipper and allows a perfect waterproofness. It also adds a few millimeters of thickness to an area that is very exposed to wind.

Available on BACKZIP



NEOPRENE ACCESSORIES



NEO ACCESS NEW COLL	
20	22

Y O U R E V E R Y D A Y
E S S E N T I A L S O N
A N D O F F T H E W A T E R .



W A R M T H	C O M F O R T
&	



NEOPRENE ACCESSORIES

OVERVIEW

NEOPRENE ACCESSORIES



2.5 MM

MAGMA HOOD

Ref. 22201-0807
Sizes. S-M-L-XL
Colors. BLACK



2.0 MM

X10D HOOD

Ref. 22201-0908
Sizes. S-M-L-XL
Colors. BLACK



5.0 MM

**MAGMA BOOTS
SPLIT TOE**

Ref. 22221-1102
Sizes.
[EU] 36-37,5-39-40-41-42-43-44-45-46
[US] 4-5-6,5-7-8-8,5-9,5-10-11-12
Colors. BLACK



3.0 MM

**X10D BOOTS
SPLIT TOE**

Ref. 22221-1204
Sizes.
[EU] 36-37,5-39-40-41-42-43-44-45-46
[US] 4-5-6,5-7-8-8,5-9,5-10-11-12
Colors. BLACK



5.0 MM

COMING IN
DECEMBER

**MAGMA BOOTS
ROUND TOE**

Ref. 22221-1502
Sizes.
[EU] 36-37,5-39-40-41-42-43-44-45-46
[US] 4-5-6,5-7-8-8,5-9,5-10-11-12
Colors. BLACK



2.5 MM

COMING IN
DECEMBER

MAGMA GLOVES

Ref. 22201-0607
Sizes. S-M-L-XL
Colors. BLACK



0.5 MM

COMING IN
DECEMBER

**MAGMA BASELAYERS
HOODED**

Ref. 22221-1301
Sizes. XS-S-M-L-XL
Colors. BLACK



0.5 MM

**X10D BASELAYERS
HOODED**

Ref. 22221-1401
Sizes. XS-S-M-L-XL
Colors. BLACK



0.5 MM

COMING IN
DECEMBER

MAGMA BASELAYERS

Ref. 22221-1302
Sizes. XS-S-M-L-XL
Colors. BLACK



2.0 MM

X10D NEO TOP

Ref. 22211-1107
Sizes. XS-S-M-L-XL
Colors. ANTHRACITE



1.0 MM

SEAFARER NEO TOP

Ref. 22211-1208
Sizes. XS-S-M-L-XL
Colors. PEWTER /
ANTHRACITE



CAR SEAT COVER

Ref. 22206-0400
Sizes. ONE SIZE
Colors. BLACK

NEOPRENE ACCESSORIES



WATERWEAR



WATERWEAR NEW COLL	
20	22



Y O U R E V E R Y D A Y
E S S E N T I A L S O N
A N D O F F T H E W A T E R .



C O M F O R T	P R O T E C T I O N
&	



WATERWEAR

OVERVIEW



BLIZZARD JACKET
Ref. 22225-0300
Sizes. S-M-L-XL-XXL
Colors. STORMY WEATHER



COMING IN
DECEMBER

OFFSHORE JACKET
Ref. 22225-0600
Sizes. S-M-L-XL-XXL
Colors. ANTHRACITE



BAMBOO PONCHO
Ref. 22216-0300
Sizes. ONE SIZE
Colors. STEEL / CASCADE



WETSHIRTS LS / SS
Ref. 22215-0600 / 22215-0700
Sizes. XS-S-M-L-XL
Colors. STEEL / TINFOIL

W A T E R W E A R

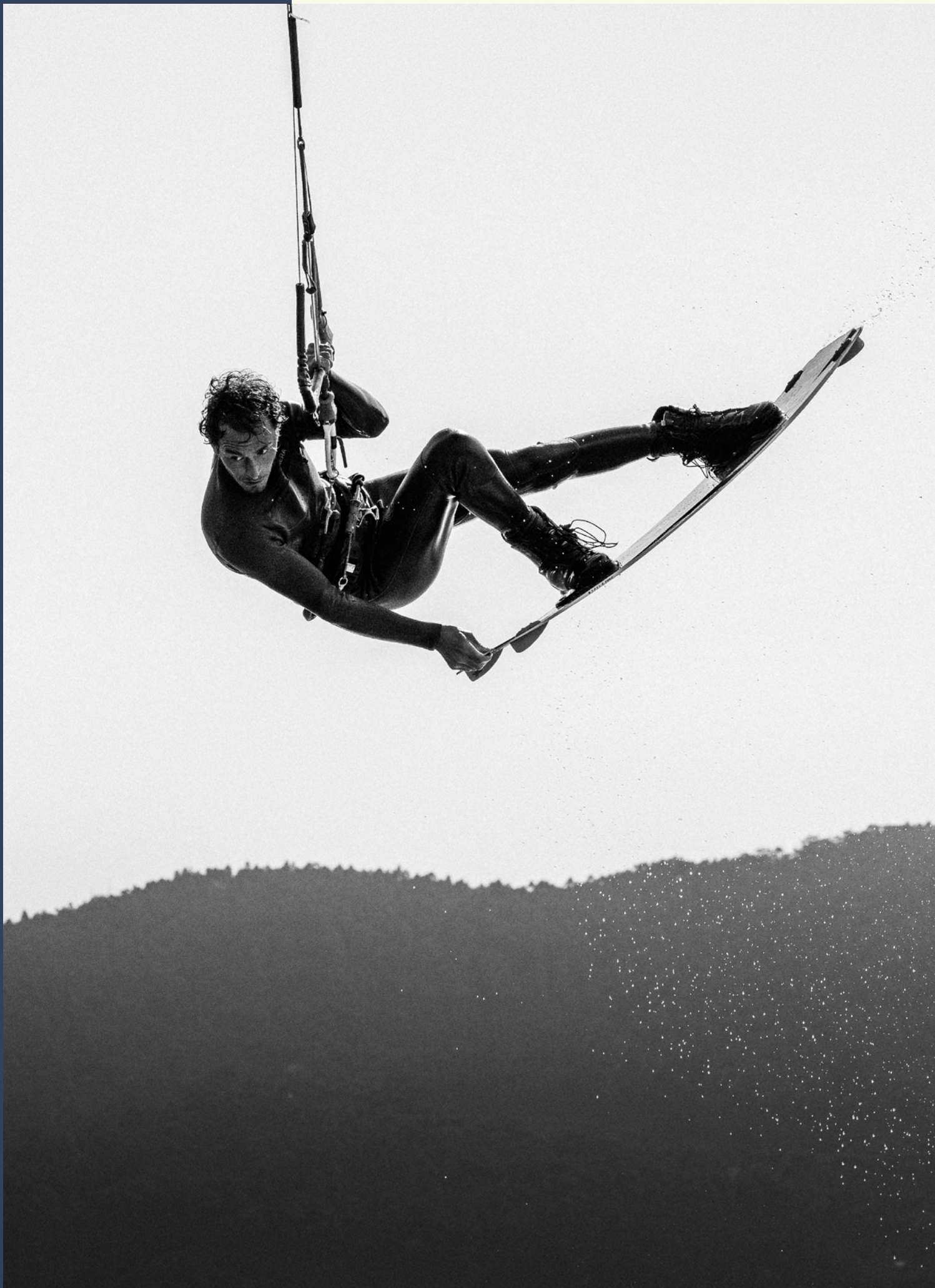
PROTECTION



PROTECTION
NEW COLL

20

22



H A V E F U N &
S T A Y S A F E .



S	D
T	U
R	R
E	A
T	B
C	L
H	E
&	



PROTECTION

OVERVIEW



BOOM VEST

Ref. 22205-0100

Sizes. S-M-L-XL

Colors. SLATE BLACK - ALLOY
BLUE / BLACK



X10D VEST

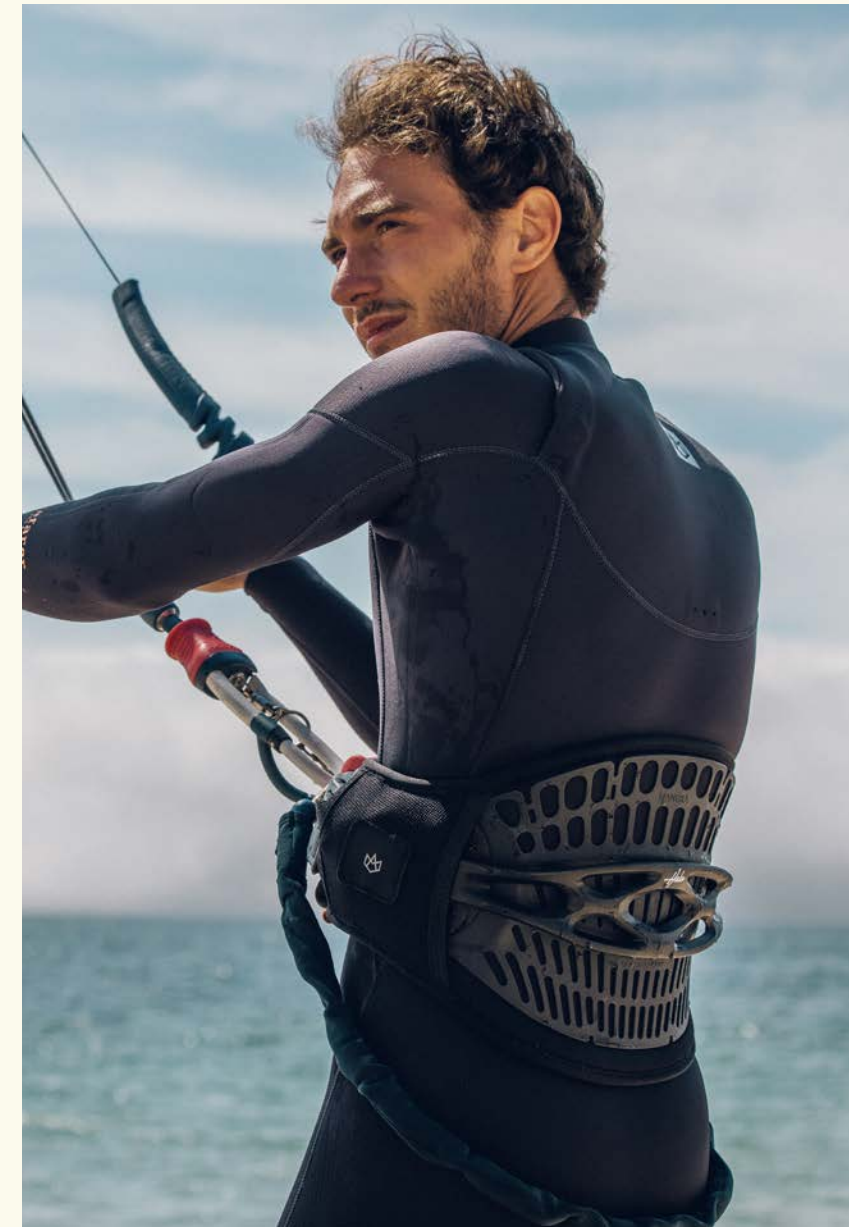
Ref. 22205-0200

Sizes. S-M-L-XL

Colors. INK BLUE / BLACK

PROTECTIONS

HARNESSES



HARNESSES
NEW COLL

20

22





M A D E T O B A C K - U P
Y O U R E V E R Y M O V E .



S U P P O R T	A D A P T A B I L I T Y
&	





BLACK

HALO

Ref. 22222-0600

Sizes. XS-S-S+-M-M+-L-XL

Colors. BLACK / STEEL BLUE

HARDSHELL	100%
LIGHTNESS	100%
DURABILITY	100%

COMING IN
DECEMBER



STEEL BLUE

HARNESS

OVERVIEW



BLACK

ECLIPSE

Ref. 22202-0100

Sizes. XS-S-M-L-XL

Colors. BLACK / STEEL BLUE

HARDSHELL	70%
LIGHTNESS	90%
DURABILITY	90%



STEEL BLUE



GRAPHITE

EXO 2.0

Ref. 22212-0200

Sizes. XS-S-M-L-XL

Colors. GRAPHITE / PEWTER
/ IMPALA

STIFFNESS	70%
LIGHTNESS	80%
DURABILITY	90%



PEWTER



SLIDING HOOK

Ref. 22202-4001

Sizes. 24CM - 28CM - 32CM

(XS-S) - (M-L) - (XL-XXL)

Colors. BLACK



ROPES

Ref. 22202-4002

Sizes. 24CM - 28CM - 32CM

(XS-S) - (M-L) - (XL-XXL)

Colors. BLACK



KITE KNIFE

Ref. 22202-5001

Sizes. UNIQUE SIZE

Colors. BLACK

KEY FEATURES

NEW HALO HARNESS



CLIP SYSTEM

- The ARC easy-to-clip system is locked once tightened, which provides a precise and smooth riding without improper movements.

Available on the HALO



SST CORE

- The ARC is built with a robust Stainless-Steel core that is able to withstand 800kg loads, which is much higher than the standard kite requirements.

Available on the HALO



TUCKFLAP 2.0

- Once inserted and locked into the harness, not only they prevent the harness from going up, but they also have an anti-compression function preventing the loads of the kite to squeeze the harness around your hips.

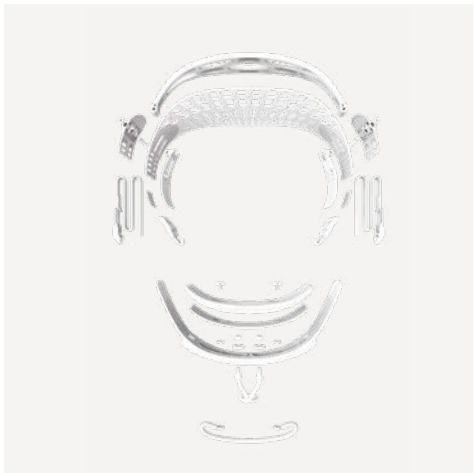
Available on the HALO



HOOK / SLIDING

- The ARC is easily convertible between standard hook and a sliding rope.

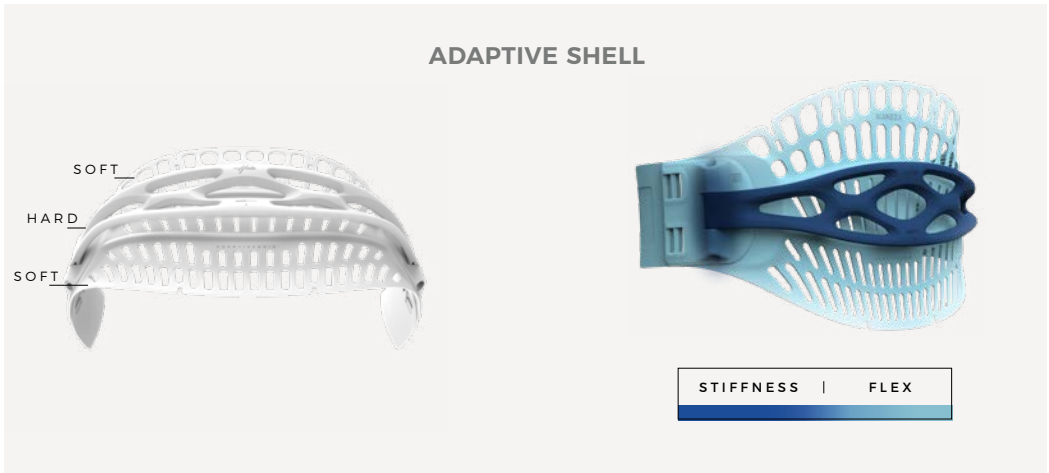
Available on the HALO



DURABILITY

- In order to reduce our carbon footprint and offer a better service to our customers, the HALO is assembled in different parts that are not stitched or glued, therefore they are easily replaceable.

Available on THE HALO



ADAPTIVE SKIN

- Is a backing strip made out of flexible material that allows maximum adaptability and freedom of movement to the user.
- It is directly in contact with the body, its function is to provide comfort to the user.

Available on THE HALO

HARD SHELL

- Is a rigid arch preventing the harness from folding due to the kite's high loads, and therefore squeezing the user's sides.
- It is not in contact with the user, its function is to sustain all the mechanical forces that the harness endures.

ÉLÉMENTS CLÉS

HARN AIS



DOWN HOLD SYSTEM

- The spreader bar has an asymmetrical attachment that distributes the forces downward
- Secured in its original position, the hook does not ride back up

Available on ALL MODEL



SPREADER BAR

- Length of our bars are well suited so they will pull along both sides of the harness
- Avoids any lateral contraction on the body

Available on ALL MODEL



SINGLE FOAM

- Thermoformed one-piece foam backing
- Much lighter than multiple foam layups used in some harnesses
- More durable as there are less parts to be glued or stitched together

Available on the EXO2



GEL FOAM

- The gel foam disperses pressure evenly & efficiently to provide a "pillow comfort", much appreciated during long sessions
- It creates a different sense of feeling while riding as it moves along with your movements, therefore the contact with the harness is more intuitive & it prevents any rash or rubbing discomfort

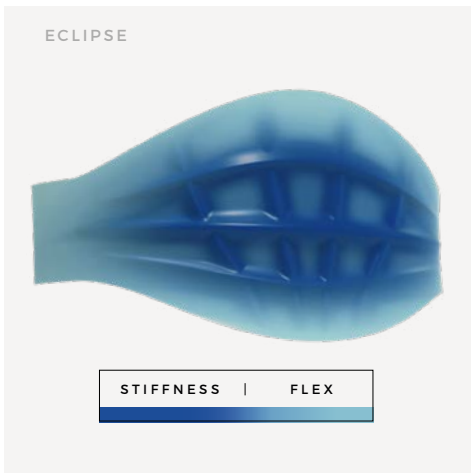
Available on the ECLIPSE



TUCK FLAP

- Flaps are inserted into the harness, they are compressed and locked when straps are tighten
- Stiffen the connection between spreader bar & harness & prevent it from riding up

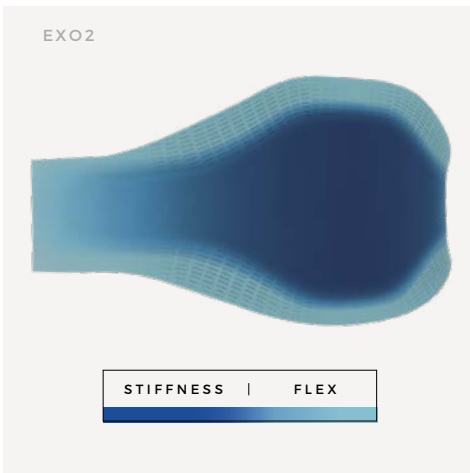
Available on ALL MODEL



ADAPTIVE SHELL

- The Adaptive Shell stiffness shades from hard in the center area to softer on the edges
- The stiff center-belt prevents the harness from folding and compressing your body while preserving a good lumbar support

Available on ALL MODEL



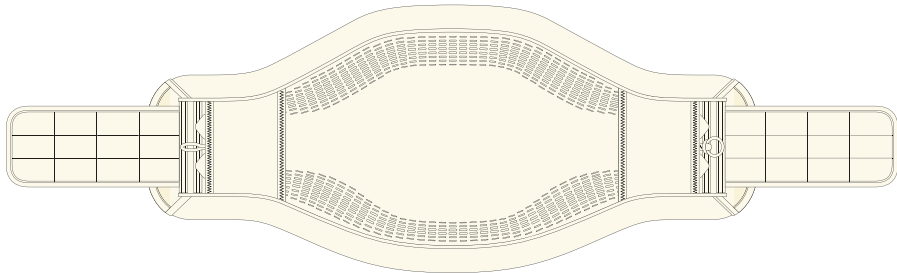
- The softer outline preserves intuitive mobility and adaptability
- It results in a shell that is forgiving where you need flex and stiff where you want support

HOW TO CHOOSE

HARNESSES

EXO 2.0

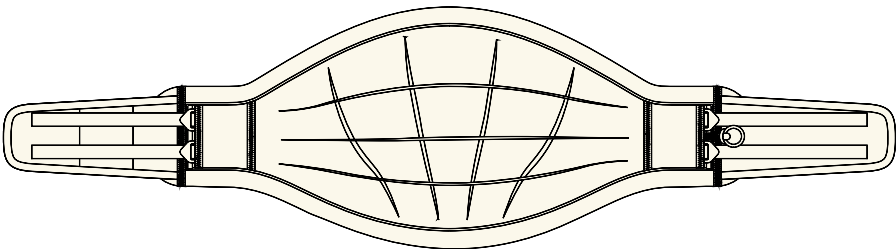
(Size M)
WEIGHT 1.75KG
HEIGHT 27.6CM



<u>HARDSHELL</u>	<u>LIGHTNESS</u>
70%	80%
<u>DURABILITY</u>	<u>PROFILE</u>
90%	High

ECLIPSE

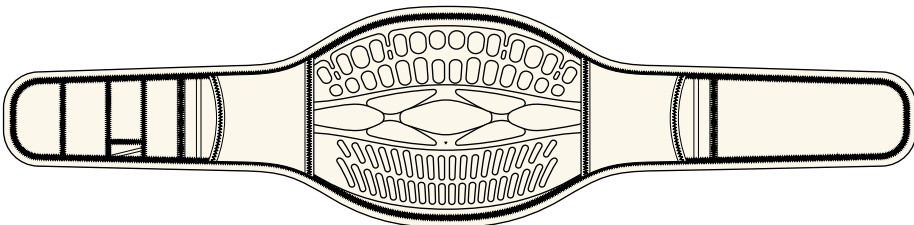
(Size M)
WEIGHT 1.55KG
HEIGHT 27CM



<u>HARDSHELL</u>	<u>LIGHTNESS</u>
70%	90%
<u>DURABILITY</u>	<u>PROFILE</u>
90%	Medium

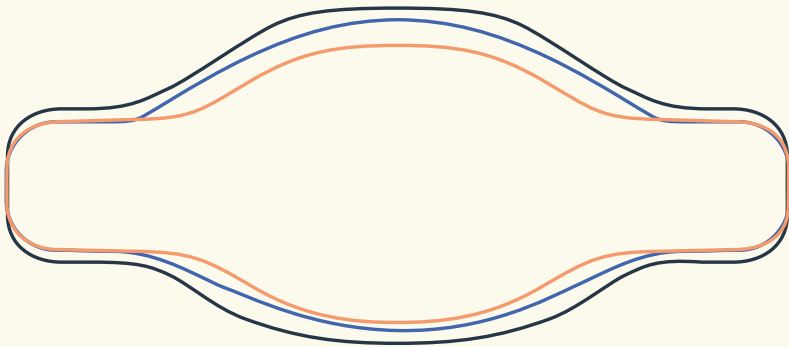
HALO

(Size M)
WEIGHT 1.35KG
HEIGHT 26CM



<u>HARDSHELL</u>	<u>LIGHTNESS</u>
100%	100%
<u>DURABILITY</u>	<u>PROFILE</u>
100%	Low

HARNESSES OUTLINES



— Exo 2.0 — Eclipse — Halo

BOARD BAGS



BOARD BAGS NEW COLL	
20	22



G R A B T H E B E S T
A D V E N T U R E P A R T N E R
O U T T H E R E .



R E S I S T	P R O T E C T
&	



BOARDBAGS

OVERVIEW

BOARDBAGS



CHUBBY WHEELS

Ref. 22203-0201
Sizes. 150 x 32 x 47CM
Weight. 4.7KG
Colors. SLATE - CREME



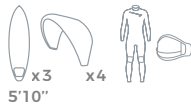
CHUBBY LIGHT

Ref. 22203-0202
Sizes. 150 x 30 x 47CM
Weight. 2.7KG
Colors. SLATE - CREME



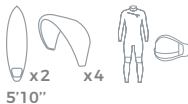
747 WHEELS

Ref. 22203-0203
Sizes. 220 x 30 x 60CM
Weight. 5.65KG
Colors. SLATE - CREME



747 WHEELS

Ref. 22203-0203
Sizes. 190 x 30 x 54CM
Weight. 5.5KG
Colors. SLATE - CREME



747 WHEELS

Ref. 22203-0203
Sizes. 175 x 30 x 54CM
Weight. 5.35KG
Colors. SLATE - CREME



747 LIGHT

Ref. 22203-0204
Sizes. 220 x 26 x 60CM
Weight. 3.2KG
Colors. SLATE - CREME



747 LIGHT

Ref. 22203-0204
Sizes. 190 x 26 x 54CM
Weight. 3.15KG
Colors. SLATE - CREME



747 LIGHT

Ref. 22203-0204
Sizes. 175 x 26 x 54CM
Weight. 3.1KG
Colors. SLATE - CREME



COMPACT 5'3"

Ref. 22203-0104
Sizes. 170 x 56CM
Weight. 1.1KG
Colors. SLATE - CREME



TWIN-TIP

Ref. 22203-0101
Sizes. 150x55CM
Weight. 1KG
Colors. SLATE - CREME



SURF 5'6"/6'0"/6'5"/7'2"

Ref. 22203-0105 / 22203-0106
22203-0107 / 22203-0108
Sizes. 170 x 55CM / 180 x 60CM
200 x 65CM / 220 x 70CM
Weight. 1.2KG
Colors. SLATE - CREME



BIGGIE 160L

Ref. 22203-0205
Sizes. 85 x 33 x 58CM
Weight. 2.15KG
Colors. SLATE - CREME



FOIL 5'3"

Ref. 22203-0103
Sizes. 165 x 55CM
Weight. 1.1KG
Colors. SLATE - CREME



POCKET 4'3"

Ref. 22203-0102
Sizes. 135 x 55CM
Weight. 0.9KG
Colors. SLATE - CREME



WING 5'7" / 6'2"

Ref. 22203-0109 / 22203-0110
Sizes. 175 x 78CM / 185 X 88CM
Weight. 0.9KG
Colors. SLATE - CREME



KITE FOIL BOX

Ref. 22203-0303
Sizes. 310 x 1100MM
Weight. 1.45KG
Colors. SLATE - CREME



SURF FOIL BOX

Ref. 22203-0304
Sizes. 560 x 860MM
Weight. 1.15KG
Colors. SLATE - CREME



FOIL COVERS

Ref. 22203-0302
Sizes. 680 / 840 / 1000MM
Weight. 1.45KG
Colors. SLATE - CREME



MAST COVERS

Ref. 22203-0301
Sizes. 650 / 750 / 850 / 1050MM
Colors. SLATE - CREME



DUFFLE BAG 45L

Ref. 22203-0401
Sizes. 65 x 30 x 23CM
Colors. ANTHRACITE - SUEDE



DAY BAG 20L

Ref. 22203-0402
Sizes. 47 x 30 x 15CM
Colors. ANTHRACITE - SUEDE

FOILBAGS

BACKPACKS

KEY FEATURES

BOARD BAGS



POLYESTER 600D PREMIUM

- Our bags are built in premium Polyester 600D, this is a choc, tearing, UV and water resistant material.
- It guarantees the best durability to our products.

Available on ALL MODEL



ALUMINIUM BUCKLES

- All the buckles are made in aluminum, to guarantee the best possible durability.

Available on the 747, CHUBBY & BIGGIE



YKK ZIPPERS

- We use heavy-duty 8mm YKK zippers built in a high-quality plastic.
- It avoids any crack, corrosion, and allow a fluid run every time you open/close the bag.

Available on ALL MODEL



« BACKPACK » STRAPS

- For LIGHT versions, the CHUBBY & 747 are easy to carry thanks to their backpack straps.

Available on the 747 LIGHT & CHUBBY LIGHT



INSIDE POCKETS

- The inside of the bag features multiple net pockets, the side pocket can store wax, fins and small accessories...
- While the top pocket can store a lycra, poncho or a small towel to protect the nose of your board.

Available on the 747, CHUBBY & BIGGIE



HIGH DENSITY FOAM

- All foil boardbags are built with a choc resistant high-density foam, which protects the foil effectively.

Available on the FOIL COVERS, MAST COVERS, KITE/SURF FOILBOX



PACK

- Extremely light & easy to pack/fold.

Available on the 747 LIGHT, CHUBBY LIGHT & BIGGIE



WHEELS

- We use high quality wheels that are durable, comfortable & not too noisy.
- WHEELS versions are padded with a thick 8mm foam that guarantees the best protection.

Available on the 747 WHEELS & CHUBBY WHEELS



OUTSIDE POCKET

- All the travel bags feature an easy-to-access outside pocket, it is made in a water-resistant material so it can store wet stuff.

Available on the 747 & CHUBBY



TRANSVERSAL STRAPS

- The transversal reinforcement straps are strategically placed to relieve the zipper and material from too much stress, so the bag can handle heavy loads even when mishandled.

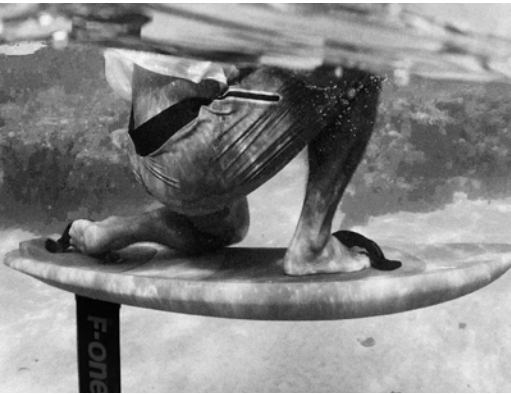
Available on the 747, CHUBBY & BIGGIE



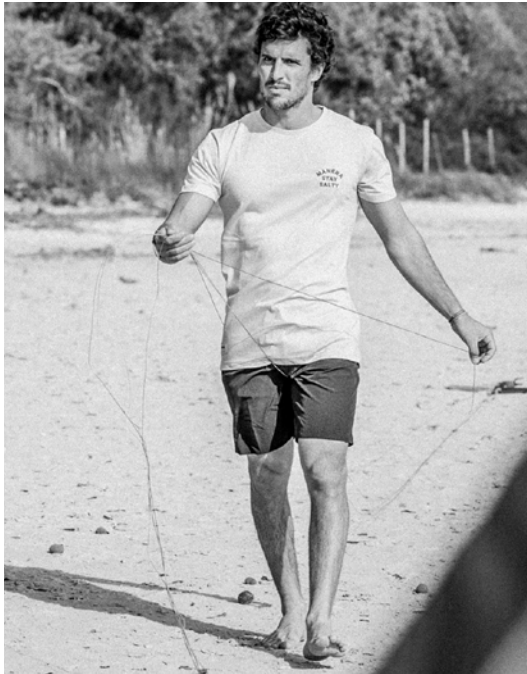
BOARDSHORTS



BOARDSHORTS NEW COLL	
20	22



S T Y L E O N L A N D ,
P E R F O R M A N C E
O N W A T E R .



S T R E T C H	D U R A B L E
&	

BOARDSHORTS

OVERVIEW

GAMBAS BOARDSHORT



BLACK



SEAGREEN

GAMBAS
Ref. 22214-0301
Sizes. 28-30-31-32-33-34-36
Colors. BLACK / SEAGREEN

HAAPITI BOARDSHORT



DARK SLATE



SANDSTONE

HAAPITI
Ref. 22214-0201
Sizes. 28-30-31-32-33-34-36
Colors. DARK SLATE / SANDSTONE

SQUAREFLEX BOARDSHORT



HAZE



NUGGET

SQUAREFLEX
Ref. 22214-0100
Sizes. 28-30-31-32-33-34-36
Colors. HAZE / NUGGET

APPAREL



APPAREL
NEW COLL

20 22



S T A Y C O M F Y
O U T O F T H E W A T E R .



S T Y L E	C O M F O R T
&	



APPAREL

OVERVIEW



MEN T-SHIRT

Ref. 22217-0100

Colors. ANTHRACITE / GREY SAND / SANDSTONE / SEAGREEN / SLATE / TOFU

Sizes XS-S-M-L-XL

Composition.

Recycled polyester 40%

Organic cotton 60%



WOMEN T-SHIRT

Ref. 22217-1000

Colors. ANTHRACITE / TOFU / SANDSTONE

Sizes XS-S-M-L-XL

Composition.

Recycled polyester 40%

Organic cotton 60%



BOBBYS

Ref. 22216-0600

Colors. SEAGREEN / BLACK

Sizes S-L

Composition.

Polyester 93%

Elastane 7%



RAIN JACKET

Ref. 22215-0500

Colors. ANTHRACITE

Sizes XS-S-M-L-XL-XXL

Features

- . 100% waterproof/windproof PVC
- . Double flap inside pockets
- . Neoprene sleeves



STEEL / Cotton SLATE / Wool Flannel WINE / Cotton



NAVY / Cotton BLACK / Cotton

CAPS

Ref. 22206-0500

Colors. ASTEEL / SLATE / WINE / NAVY / BLACK

Composition.

Cotton / Wool flannel



ANTHRACITE ORION



SANDSTONE

BEANIES

Ref. 22217-1100

Colors. ANTHRACITE / ORION / SANDSTONE

Composition.

Cotton

COLORS

2022 SHADES

BLUE	ANTHRACITE	GRAPHITE	SAILOR BLUE	SLATE BLACK	INK BLUE	SLATE	CASCADE	PEWTER	NAVY
BLUE/ GREEN	ORION BLUE	STEEL BLUE	STORMY	TINFOIL	HAZE				
RED	BORDEAUX	WINE							
BROWN	NUGGET	SUEDE	SANDSTONE	GREY SAND					
GREEN	SEAGREEN	STEEL GREEN							
OTHER	CREAM	TOFU		BLACK	WHITE				

NEW RANGE
NEW COLORS
NEW STYLE

**BECAUSE WE BELIEVE
EVERY MOMENT OUT THERE
SHOULD BE A GREAT ONE.**

MANERA is a French family-business which develops high-quality watersports gear.

Our passion is to put innovation and creation at the service of our pleasure in the ocean.

We drive our business with high requirements and loyalty. Thus, we only offer high-quality products through a network of trusted, specialized shops.

MANERA was founded so that we could make the most of the time we spend on the water, without getting cold or feeling uncomfortable. We've got your back in the storm and we make sure you can remain there until you've had enough fun.

Julien Salles

s t a y f a m i l y

F-ONE SAS

ZAC de la Méditerranée
175, Route de la Foire
34470 PÉROLS - FRANCE

Tél. +33 (0) 4 67 99 51 16
Fax. +33 (0) 4 67 99 61 93

WWW.MANERA.COM

